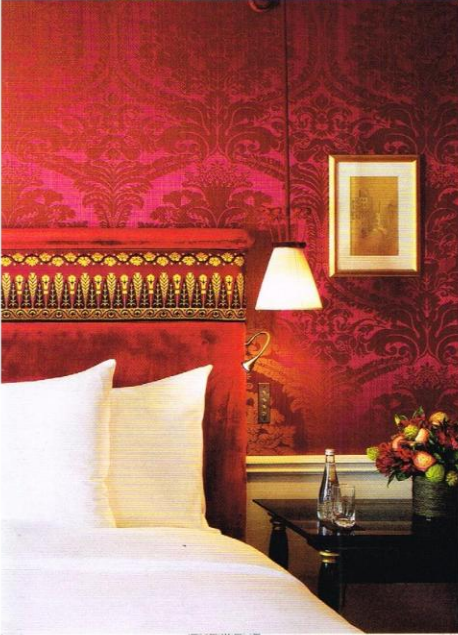
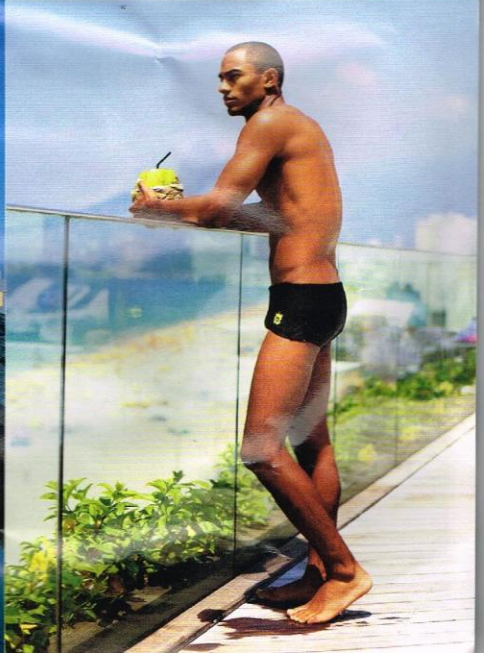
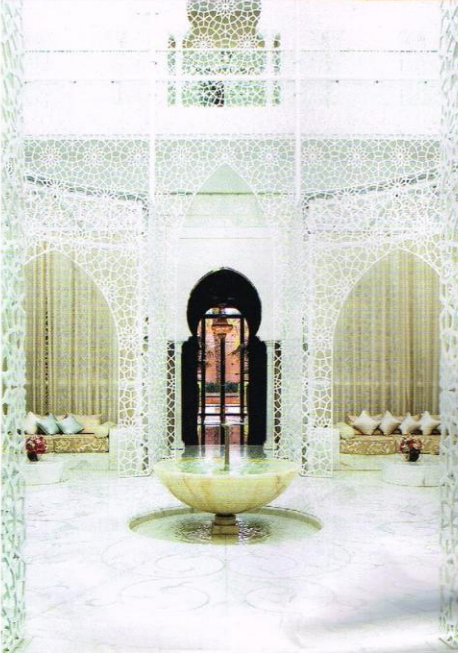
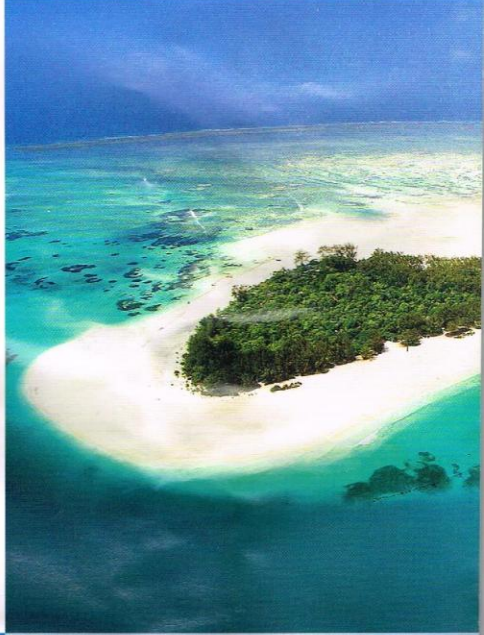


The Telegraph  
ultratravel

SPECIAL ISSUE



OUR GUIDE TO THE  
**50**  
GREATEST *HOTELS*  
IN THE WORLD



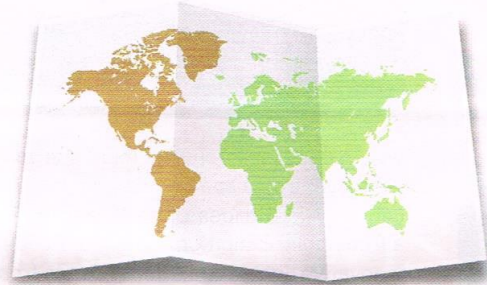


# The AMERICAS & CARIBBEAN

## MASHPI LODGE

**Chocó - ECUADOR**

WHEN THIS MODERN, minimalist, glass-walled jungle lodge opened in 2012, it changed the accommodation game in South America. Architect Alfredo Ribadeneira's "protective cocoon" would impress in a modern city; in the depths of the Andean cloudforest, it is wild, audacious and beautiful. Though only 70 miles from Quito, Mashpi Lodge sits in splendid isolation, perched on a cliff at the end of an unsealed road. Sensitive tucked into the canopy, you don't see it till you arrive. Inside, grey tiled floors, natural hues and exposed tubing mean nothing detracts from what guests are here to experience: the greenery that wraps around the hotel's huge walls of clear tempered glass. The 22 rooms maintain the clean design lines, featuring bamboo-and-glass décor, soft rugs and plush armchairs. Three Yaku suites are more spacious, and come with Philippe Starck baths. Days kick off with pre-breakfast birdwatching, before heading to the butterfly sanctuary, observation tower, aerial canopy ride and jungle trails. Biodiversity is breathtaking in the Chocó-Darién region, and the olinguito – the first carnivorous mammal discovered in 35 years – can be observed here. Adventures completed and species ticked, a Jacuzzi, cocktail and Peruvian fusion food await. *CM*  
*Doubles from £864; mashpilodge.com*  
*Full review telegraph.co.uk/mashpilodge*



### OUR EXPERTS

*Debbie Pappyn, Doug Gray, Fred Mauer, Chris Moss, Nigel Richardson, Douglas Rogers, Nigel Tisdall, Celia Walden, Claire Wrathall*

